

vtech[®]
baby

Instruction Manual

Lil' Zebra Laptop™



INTRODUCTION

Thank you for purchasing the **Lil' Zebra Laptop™**!

The **Lil' Zebra Laptop™** is cute, striped and fun all over! Buttons introduce shapes, letters and numbers, while the roller, mouse and poppers give little fingers a workout.



INCLUDED IN THE PACKAGE

- Lil' Zebra Laptop™
- Quick Start Guide

WARNING

All packing materials such as tape, plastic sheets, packaging locks, removable tags, cable ties, cords and packaging screws are not part of this toy, and should be discarded for your child's safety.

NOTE

Please save this Instruction Manual as it contains important information.

ATTENTION

Pour la sécurité de votre enfant, débarrassez-vous de tous les produits d'emballage tels que rubans adhésifs, feuilles de plastique, attaches, étiquettes, cordons et vis d'emballage. Ils ne font pas partie du jouet.

NOTE

Il est conseillé de sauvegarder ce manuel d'utilisation car il comporte des informations importantes.

WARNING

Adult supervision is recommended.

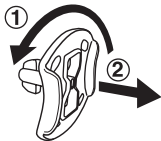
- When playing with the poppers, ensure they are kept at an appropriate distance away from the eyes and face.
- Do not place, or attempt to launch anything on the poppers.

NOTE

La supervision d'un adulte est requise.

- S'assurer que l'enfant joue à une distance appropriée des boutons Pop et loin de ses yeux ou ceux d'une autre personne.
- Ne pas poser d'objets sur les boutons Pop.

Unlock the Packaging Locks

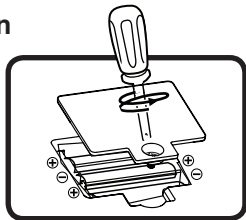


- ① Rotate the packaging locks 90 degrees counterclockwise.
- ② Pull out the packaging locks and discard.

GETTING STARTED

Battery Removal and Installation

1. Make sure the unit is turned **Off**.
2. Find the battery cover located on the bottom of the product, use a screwdriver to loosen the screw and then open the battery cover.
3. Remove old batteries by pulling up on one end of each battery.
4. Install 3 new AAA (AM-4/LR03) batteries following the diagram inside the battery box. (The use of new alkaline batteries is recommended for maximum performance.)
5. Replace the battery cover and tighten the screw to secure.



WARNING:

Adult assembly required for battery installation.
Keep batteries out of reach of children.



ATTENTION :

Les piles ou accumulateurs doivent être installés par un adulte.
Tenir les piles ou accumulateurs hors de portée des enfants.

IMPORTANT: BATTERY INFORMATION

- Insert batteries with the correct polarity (+ and -).
- Do not mix old and new batteries.
- Do not mix alkaline, standard (carbon-zinc) or rechargeable batteries.
- Only batteries of the same or equivalent type as recommended are to be used.
- Do not short-circuit the supply terminals.
- Remove batteries during long periods of non-use.
- Remove exhausted batteries from the toy.
- Dispose of batteries safely. Do not dispose of batteries in fire.

RECHARGEABLE BATTERIES

- Remove rechargeable batteries (if removable) from the toy before charging.
- Rechargeable batteries are only to be charged under adult supervision.
- Do not charge non-rechargeable batteries.

PRODUCT FEATURES

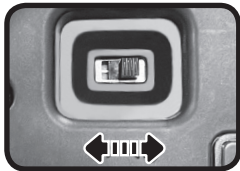
1. On/Off/Mode Selector

To turn the unit **On**, slide the **On/Off/Mode Selector** to the **Learning mode** 🔍 or **Music mode** 🎵 position. You will hear a song, playful sounds and a phrase. To turn the unit **Off**, slide the **On/Off/Mode Selector** to the **Off** ⏻ position.



2. Volume Switch

Slide the **Volume Switch** to select High volume 📢 or Low volume 📢).



3. Automatic Shut-Off

To preserve battery life, the **Lil' Zebra Laptop™** will automatically power-down after approximately 20 seconds without input. The unit can be turned **On** again by pressing any button.

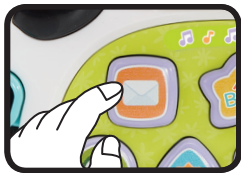
NOTE

If the unit powers down during play, please install a new set of batteries.

ACTIVITIES

1. Shape Buttons

Press the **Shape Buttons** to learn letters and a variety of new words, playful phrases and fun sounds in Learning mode. In Music mode you will hear sing-along songs and melodies. The mouth will light up with the sound.



2. Number Pad

Press the **Number Pad** to learn about numbers and her sounds and music, depending on the selected mode. The mouth will light up with the sound.



MELODIES

1. Did You Ever See a Lassie?
2. Do You Know the Muffin Man?
3. London Bridge
4. Where Has My Little Dog Gone?
5. Head and Shoulders
6. Pat-a-Cake
7. Happy Farmer
8. Old King Cole
9. Little Miss Muffet
10. Here We Go Round the Mulberry Bush
11. Humpty Dumpty
12. One, Two Buckle My Shoe

SONG LYRICS

Song 1

Tap the keys, learn and play,
Time with you lights up my day!

Song 2

A, B, C, D, E, F, G,
H, I, J, K, L, M, N, O, P,
Q, R, S, T, U, V,
W, X, Y and Z.

Song 3

One, two, three, four, five,
Six, seven, eight and nine!
Learning to count is fun.
Sing and count every day!

Song 4

Listen to some beats,
Sing about letters and numbers,
While we play today!

CARE & MAINTENANCE

1. Keep the unit clean by wiping it with a slightly damp cloth.
2. Keep the unit out of direct sunlight and away from any direct heat sources.
3. Remove the batteries if the unit will not be in use for an extended period of time.
4. Do not drop the unit on hard surfaces and do not expose the unit to moisture or water.

TROUBLESHOOTING

If for some reason the unit stops working or malfunctions, please follow these steps:

1. Please turn the unit **Off**.
2. Interrupt the power supply by removing the batteries.
3. Let the unit stand for a few minutes, then replace the batteries.
4. Turn the unit **On**. The unit should now be ready to play again.

NOTE

This equipment has been tested and found to comply with the limits for a Class B digital device, pursuant to Part 15 of the FCC Rules. These limits are designed to provide reasonable protection against harmful interference in a residential installation. This equipment generates, uses and can radiate radio frequency energy and, if not installed and used in accordance with the instructions, may cause harmful interference to radio communications. However, there is no guarantee that interference will not occur in a particular installation. If this equipment does cause harmful interference to radio or television reception, which can be determined by turning the equipment off and on, the user is encouraged to try to correct the interference by one or more of the following measures:

- Reorient or relocate the receiving antenna.
- Increase the separation between the equipment and receiver.
- Connect the equipment into an outlet on a circuit different from that to which the receiver is connected.
- Consult the dealer or an experienced radio/TV technician for help.

CAUTION

Changes or modifications not expressly approved by the party responsible for compliance could void the user's authority to operate the equipment.

IMPORTANT NOTE:

If the problem persists, please contact our **Consumer Services Department** at **1-800-521-2010** in the U.S., **1-877-352-8697** in Canada, or by going to our website **vtechkids.com** and filling out our **Contact Us** form located under the **Customer Support** link. Creating and developing VTech products is accompanied by a responsibility that we take very seriously. We make every effort to ensure the accuracy of the information, which forms the value of our products. However, errors sometimes can occur. It is important for you to know that we stand behind our products and encourage you to contact us with any problems and/or suggestions you might have. A service representative will be happy to help you.

Supplier's Declaration of Conformity

47 CFR § 2.1077 Compliance Information

Trade Name: VTech®
Model: 5647
Product Name: Lil' Zebra Laptop™
Responsible Party: VTech Electronics North America, L.L.C
Address: 1156 W. Shure Drive, Suite 200
Arlington Heights, IL 60004
Website: vtechkids.com

THIS DEVICE COMPLIES WITH PART 15 OF THE FCC RULES. OPERATION IS SUBJECT TO THE FOLLOWING TWO CONDITIONS: (1) THIS DEVICE MAY NOT CAUSE HARMFUL INTERFERENCE, AND (2) THIS DEVICE MUST ACCEPT ANY INTERFERENCE RECEIVED, INCLUDING INTERFERENCE THAT MAY CAUSE UNDESIRED OPERATION.
CAN ICES(B)/NMB(B)

**Visit our website for more
information about our products,
downloads, resources and more.**

vtechkids.com
vtechkids.ca

Read our complete warranty policy online at
vtechkids.com/warranty
vtechkids.ca/warranty

